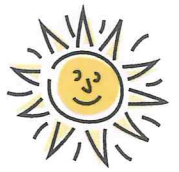




Summer will be here before we know it!!



# Camp Sunshine

For children ages 3 (as of September 1, 2018) to age 6 (entering First Grade)

Registration begins Monday, March 5, 2018 in the preschool office.

*Please stop by the preschool office to pick up an enrollment form if you are interested in registering.*

*3 days per week - (Tuesday, Wednesday, Thursday)*

OR

*5 days per week - (Monday through Friday)*

- ⚙ *Hands-on learning and fun in a loving, Christian atmosphere*
- ⚙ *Developmentally appropriate activities for young children*
- ⚙ *Kindergarten Enrichment class for 5 & 6 year-olds*
  - ⚙ *Low Student/Teacher Ratios*
  - ⚙ *Certified Teachers*

<i>Weekly Rates</i>	<i>3 Days (Tues, Wed, Thurs)</i>	<i>5 Days (Monday - Friday)</i>
<i>9 am - 1 pm</i>	<i>\$100</i>	<i>\$140</i>
<i>9 am - 2:30 pm</i>	<i>\$125</i>	<i>\$180</i>

**Registration fee - \$20 for one week, \$40 for 2 or more weeks**

- *Children bring snack and lunch daily.*
- *Daily Cracker Jack Club (1:00 - 2:30) sign-ups available: \$10/day*
- **Registration fee and THE FULL FIRST WEEK'S TUITION are due at registration.**
- *Tuition balance due first on the day of camp.*
- *10% sibling discount available.*

**Week 1 - June 19,20,21 (3 Days) -or- June 18,19,20,21,22 (5 Days)**

**Week 2 - June 26,27,28 (3 Days) -or- June 25,26,27,28,29 (5 Days)**

*(NO CAMP THE WEEK OF July 2-6)*

**Week 3 - July 10,11,12 (3 Days) -or- July 9,10,11,12,13 (5 Days)**

**Week 4 - July 17,18,19 (3 Days) -or- July 16,17,18,19,20 (5 Days)**



*Camp schedule subject to change or to cancelation if minimum capacity is not met.*